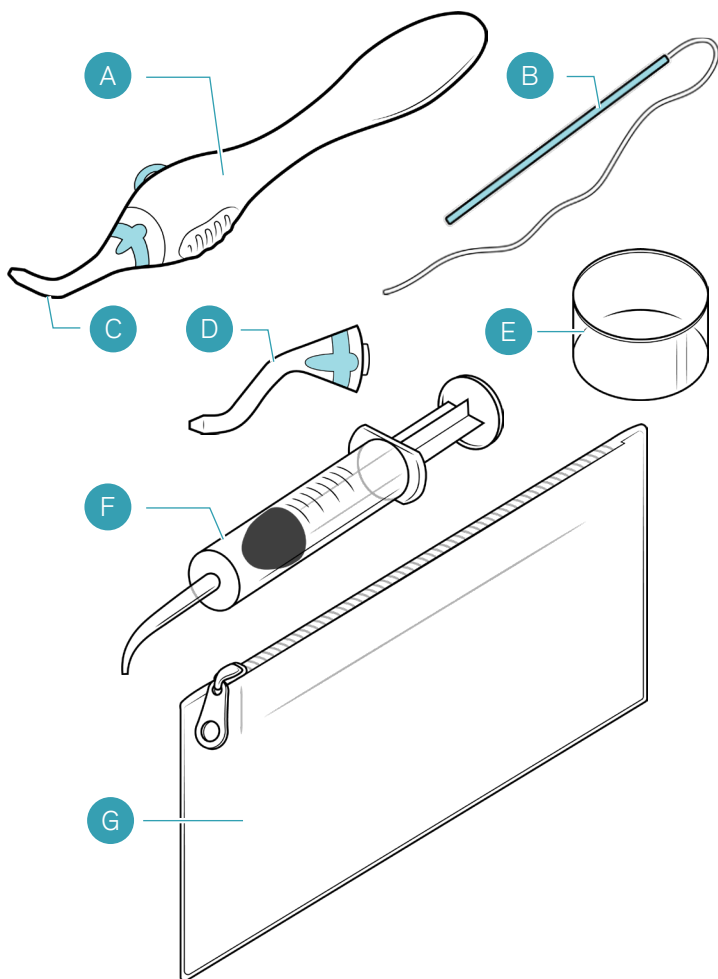




## Table of Contents

|                                     |    |
|-------------------------------------|----|
| Starter Kit Contents .....          | 2  |
| The AutoFlosser Handle .....        | 3  |
| The AutoFlosser Tips .....          | 5  |
| Loading The AutoFlosser .....       | 11 |
| Flossing with The AutoFlosser ..... | 12 |
| Cleaning The AutoFlosser .....      | 14 |
| Troubleshooting .....               | 18 |

# Starter Kit Contents



**A** The AutoFlosser

**E** Cup

**B** AutoFlosser FLOSS

**F** Cleaning Irrigator

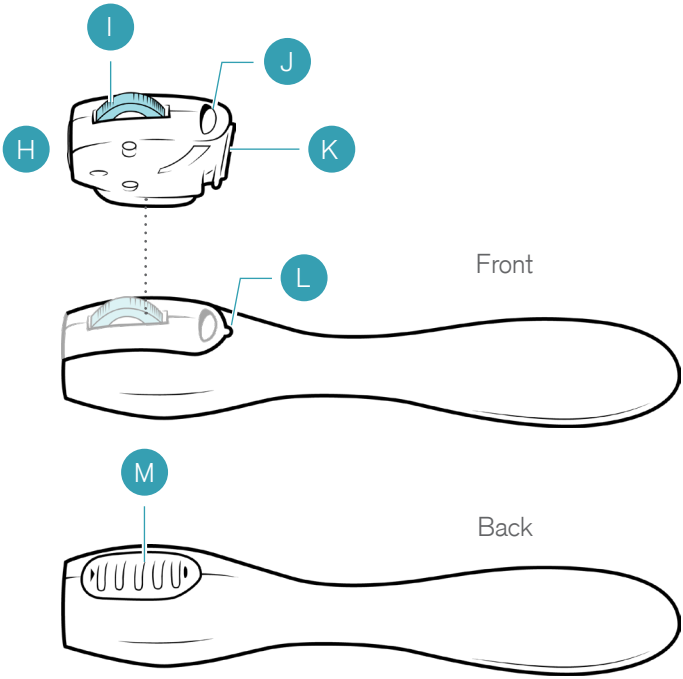
**C** Single Bend Tip  
(attached)

**G** Storage Pouch

**D** Double Bend Tip



# The AutoFlosser Handle



**H** Drive Cartridge

**I** Drive Wheel

**J** Loading Area

**K** Orientation Ridge

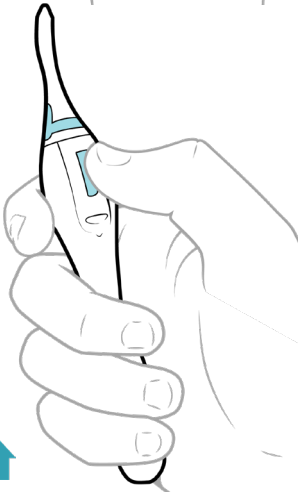
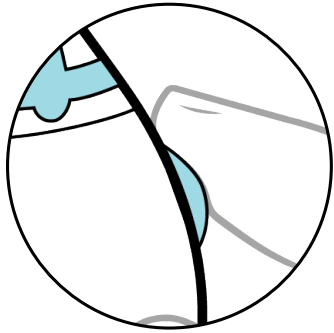
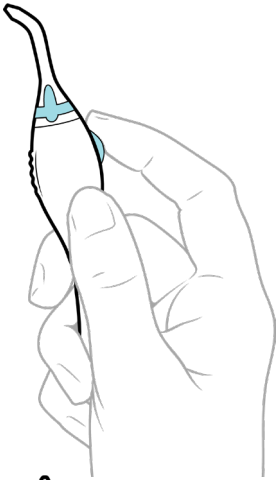
**L** Orientation Groove

**M** Textured Finger Rest



## Holding The AutoFlosser

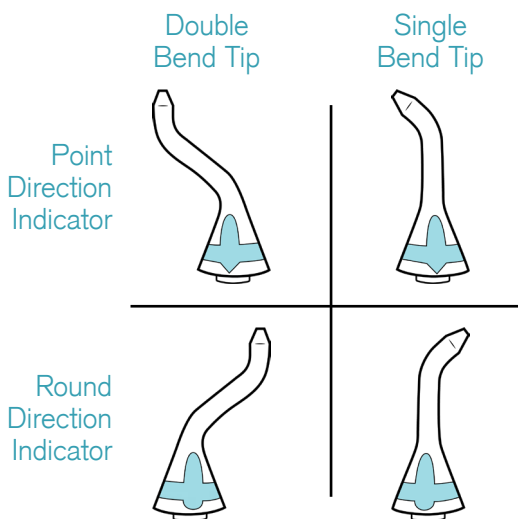
Getting comfortable with The AutoFlosser begins with holding it correctly. The AutoFlosser Handle is meant to be held in the palm of your hand with either your index finger or thumb resting on the Drive Wheel. There is no right or wrong way. Choose what is most comfortable.



# The AutoFlosser Tips

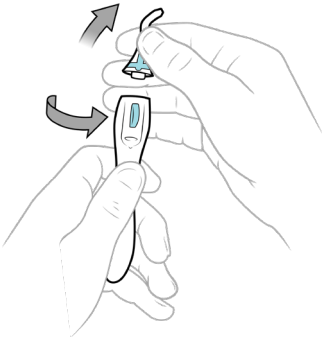
## VERY IMPORTANT - Please Read

- The AutoFlosser Tips are necessary to direct the FLOSS through any dental space. This section will teach you how to remove, attach, select, and align the Tips.
- The Tips are easily removed and attached to the Handle in one of two directions. Read [Removing & Attaching the Tips](#) on page 6 to learn more.
- Two variations of the Tips are included with your Starter Kit: the Single Bend Tip and the Double Bend Tip. As you become familiar with your AutoFlosser, you will find that one Tip may fit into your dental space more easily than the other. Read [Selecting the Tip](#) on page 7 to learn more.
- There are two Direction Indicators on each Tip: one Round and one Point. These markings will aid in attaching the Tip to the Handle in one of two opposing directions. Read [Removing & Attaching The Tips](#) on page 6 to learn more.

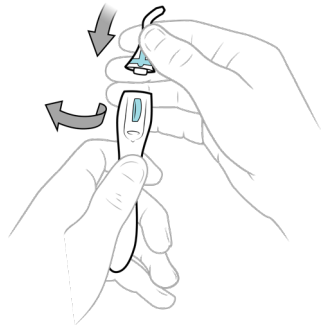


## Removing & Attaching the Tips

1. To remove the Tip, rotate counter-clockwise, then pull upward.
2. To attach the Tip, align one of the two Direction Indicators with the Drive Wheel, then insert and turn clockwise to lock in place.

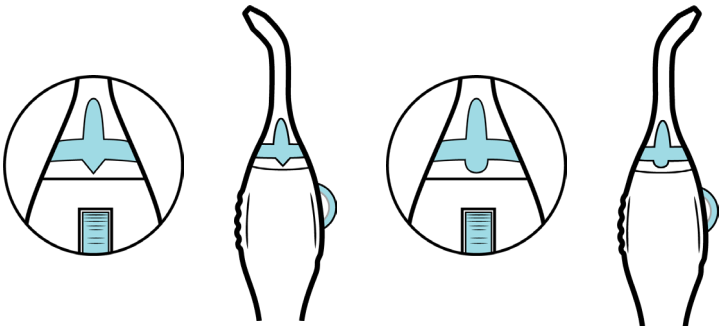


Removing the Tip



Attaching the Tip

3. Aligning the Point Direction Indicator will orient the Tip in one direction while aligning the Round Direction Indicator will orient the Tip in the opposite direction. Read [Aligning the Direction of the Tip](#) on page 8 to learn more.

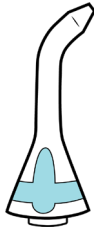


## Selecting the Tip to Use

- The most important criteria in selecting either the Single Bend or Double Bend Tip is that it easily reaches the space to be cleaned while being comfortable in your hand.

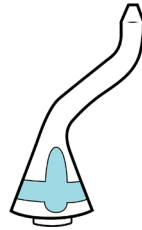
Although there is no absolute rule as to which Tip to use, we recommend the following:

For Bridges, Braces, & Bonded Retainers



Single Bend Tip

For All-on-Xs



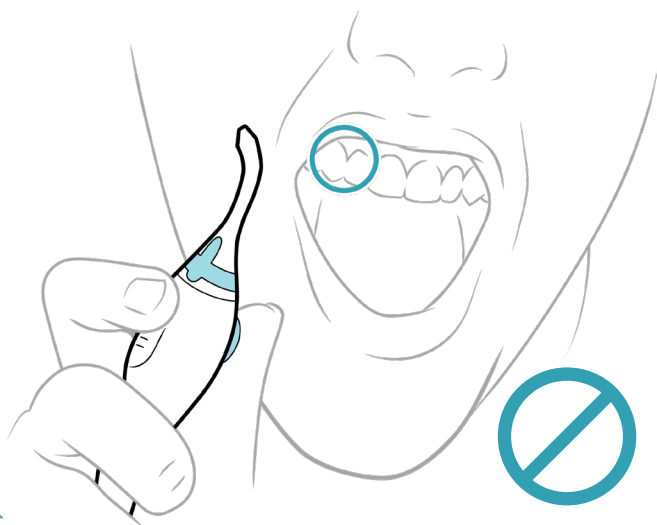
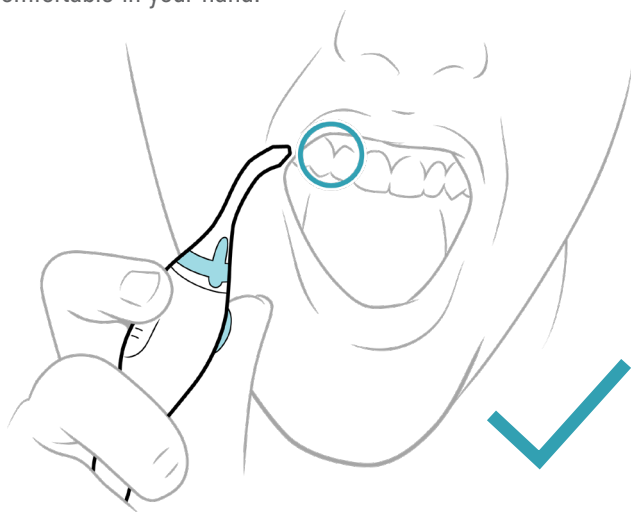
Double Bend Tip

### Examples



## Aligning the Direction of the Tip

- The most important criteria in correctly aligning the Tip is that it must aim straight into the space to be cleaned while being comfortable in your hand.



Although there is not one correct Direction of the Tip for each situation, we recommend the following:

## Single Bend Tip



Braces

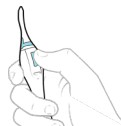


Retainers



Bridges

With thumb on Wheel



Align using Round Mark



With finger on Wheel



Align using Point Mark

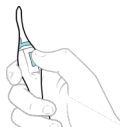


## Double Bend Tip



"All-on-X" Implant Bridges

With thumb on Wheel



When Cleaning Upper  
Use Point Mark



When Cleaning Lower  
Use Round Mark



With finger on Wheel



When Cleaning Upper  
Use Round Mark

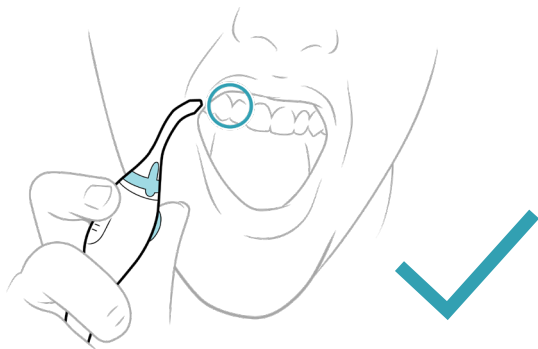


When Cleaning Lower  
Use Point Mark

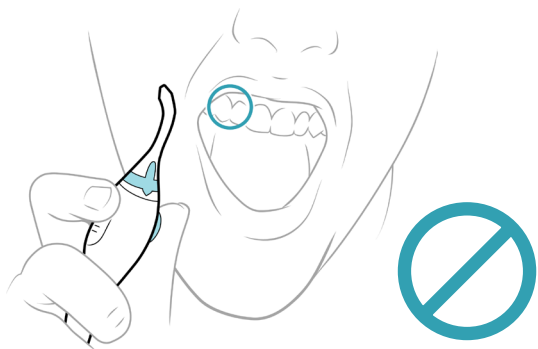


## Checking the Tip Direction

- With the Tip attached to the Handle, hold the Tip close to the space to be cleaned.
- If the Tip points straight through the space and it is comfortable in your hand, then everything is correct.



- If the Tip points away from the space, then change the direction of the Tip by removing the Tip and re-attaching while using the alternate Direction Indicator.



- If the Tip does not reach easily into the space, try using the alternate Tip.

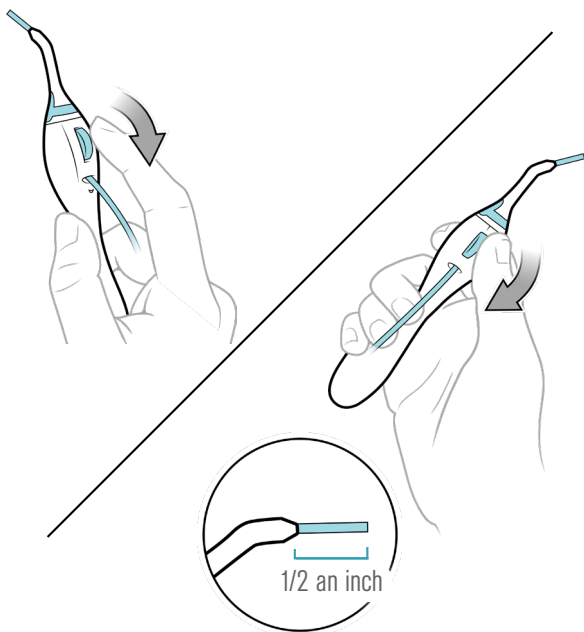


# Loading the AutoFlosser

1. Insert approximately 2 inches of the longer stiff end of the FLOSS into the Loading Area.

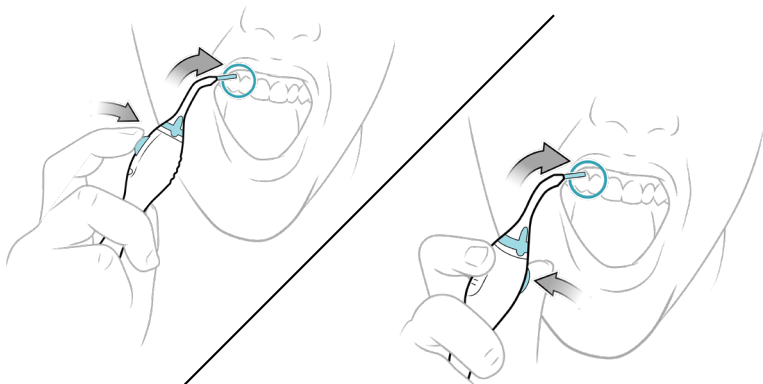


2. Press and pull the Drive Wheel with thumb or index finger until 1/2 an inch of FLOSS emerges from the tip.

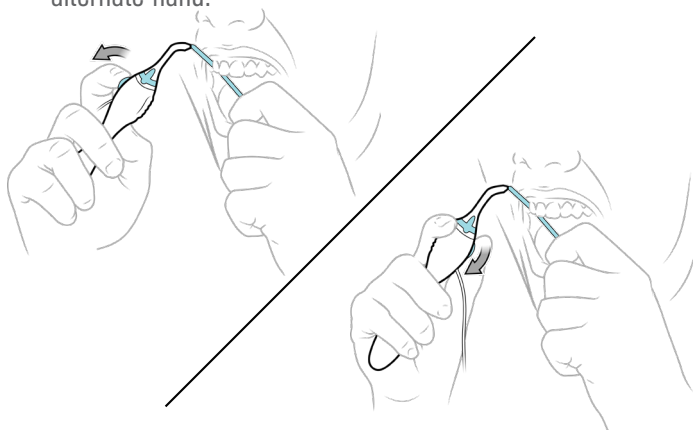


# Flossing with the AutoFlosser

1. Press down and hold the Drive Wheel to lock the FLOSS in place. Then insert the 1/2 an inch of FLOSS into the space.



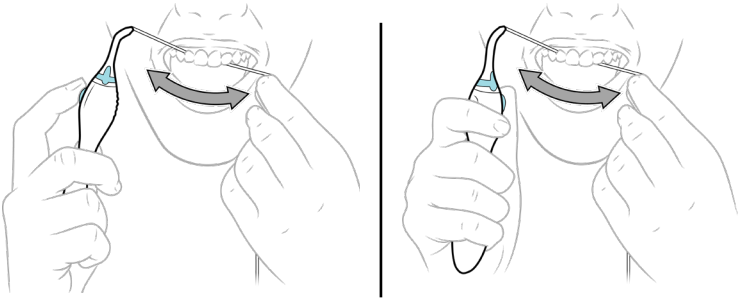
2. Press and pull the Drive Wheel until FLOSS emerges on the opposite side of the space and grab FLOSS with your alternate hand.



3. Pull FLOSS until the soft, cleaning portion is in the space to be cleaned.



4. Press down and hold on the Drive Wheel with your thumb or finger to lock FLOSS in place.
5. Use the AutoFlosser Handle to guide the FLOSS in back-and-forth and/or up-and-down motions to clean the space.



6. Release the FLOSS by removing thumb or finger from the Drive Wheel and pull out of the space.



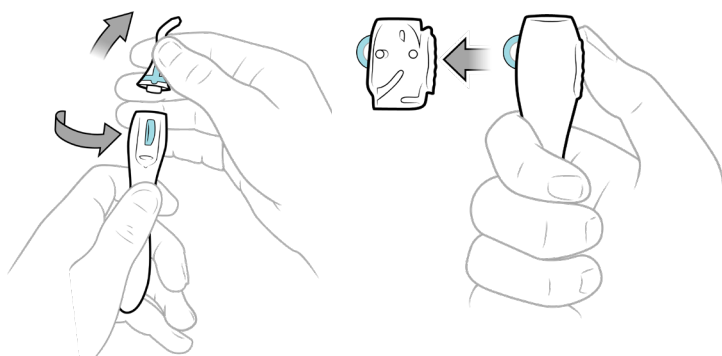
7. Repeat these steps as needed in other spaces.



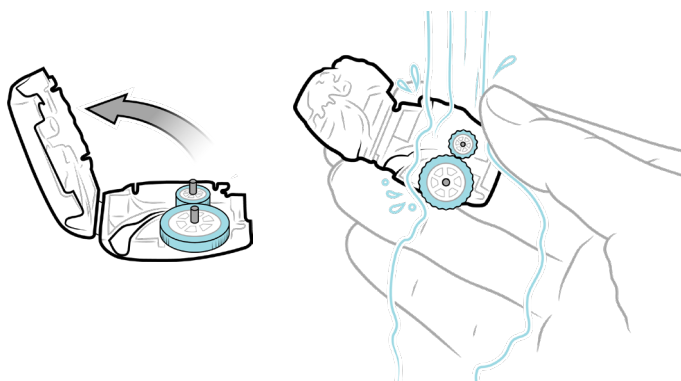
# Cleaning The AutoFlosser

## Removing, Cleaning, & Reinserting the Drive Cartridge

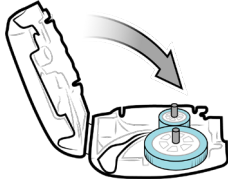
1. Cleaning is fast and easy. It is recommended to clean The AutoFlosser after each use.
2. Remove the attached Tip. Remove Drive Cartridge by gently pushing the Textured Finger Rest with your thumb.



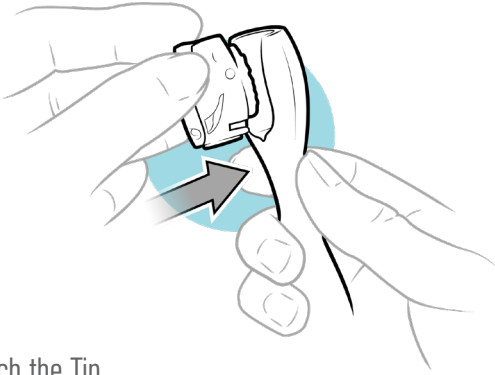
3. Open the Drive Cartridge. Rinse the inside of the cartridge with warm water and allow to air dry.



4. Close the Drive Cartridge.



5. To insert the Drive Cartridge, place the Textured Finger Rest into the Handle while aligning the Ridge on the Cartridge with the Orientation Groove and snap into place.

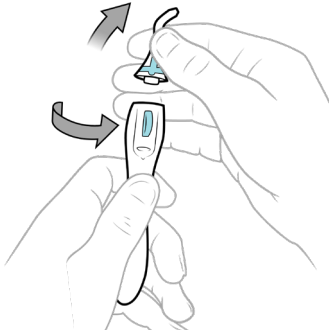


6. Reattach the Tip.

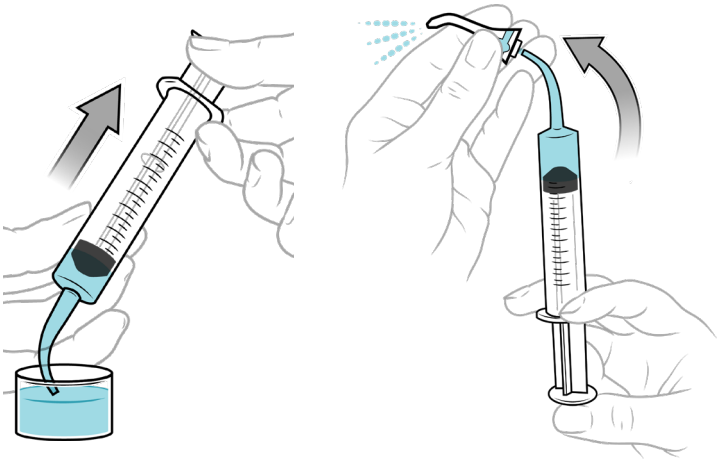


## Cleaning the Tips

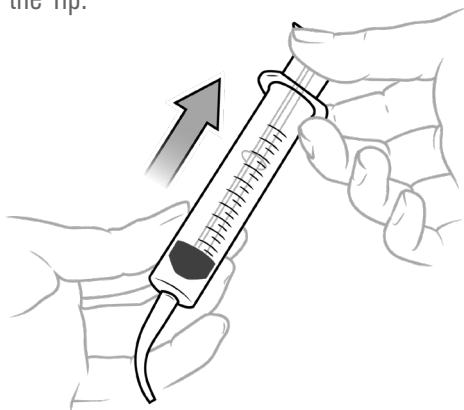
1. Remove the attached Tip.



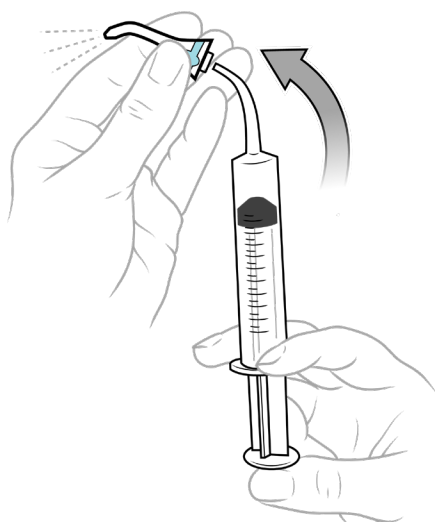
2. Fill the Cup with warm water and draw into the Cleaning Irrigator.
3. Place the tip of the Cleaning Irrigator into the hole on the base of the Tip, and gently flush water through to remove any plaque and food debris.



4. Once empty, draw air into the Cleaning Irrigator.
5. Place the tip of the Cleaning Irrigator into the hole on the base of the Tip.



6. Gently push air through the Tip to remove any water to dry.



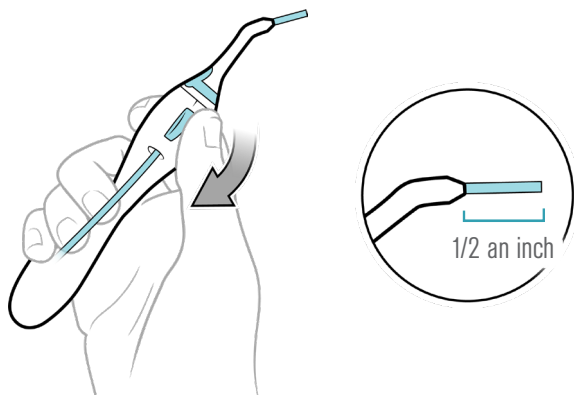
©2025 V.B. Rogers



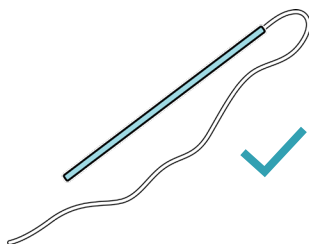
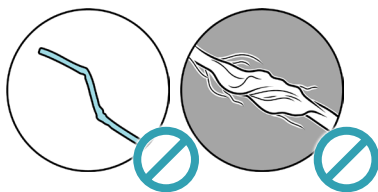
# Troubleshooting

If the FLOSS does not pass through the space:

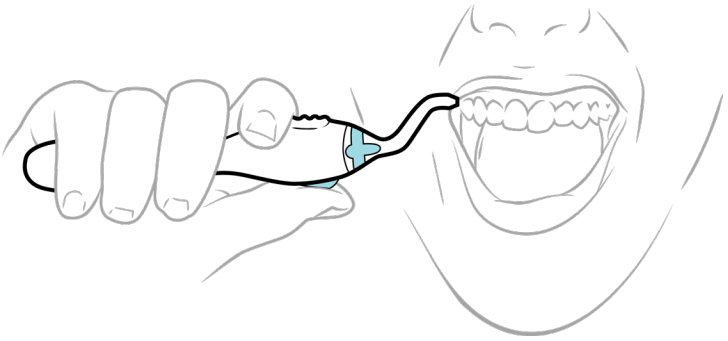
- Load the FLOSS so that 1/2 an inch pokes out of the Tip. Lock the FLOSS in place by pressing down on the Drive Wheel and hold firmly. Use the Handle to insert and guide the stiff end of the FLOSS into the space, and then pull the Drive Wheel to advance the FLOSS through.



- *Firmly* press the Drive Wheel with thumb or finger while turning.
- Use a new piece of FLOSS if the tip is bent, frayed, or worn.



- Make sure to angle the FLOSS straight through the space so it is not pointing into the gums.



- FOR BRIDGES AND ALL-ON-XS: There may not be a large enough opening for the FLOSS. Most bridges and All-on-X prosthetics can be modified by a dentist with the AutoFlosser Notch and Groove.

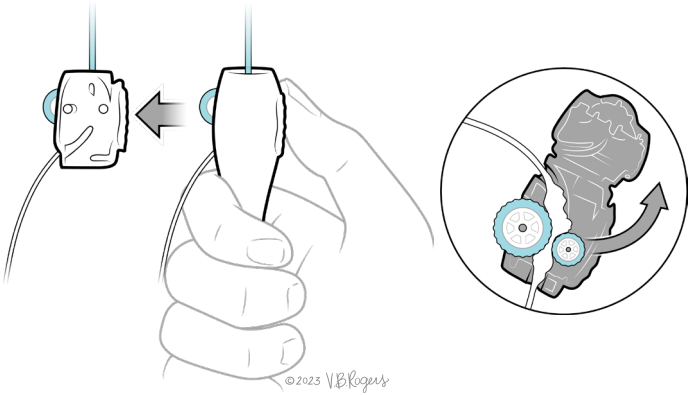


Scan the QR code, print the page,  
and present to your dentist.

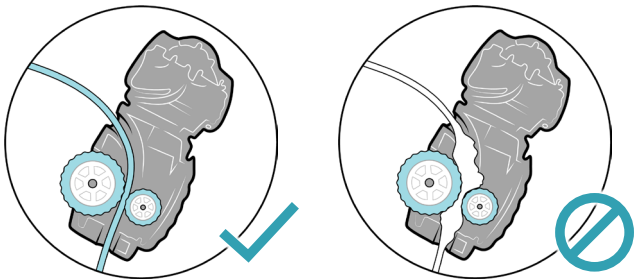


## If the FLOSS gets tangled within the Drive Cartridge:

- Remove the Drive Cartridge.
- Open the Drive Cartridge and carefully remove damaged FLOSS. Close and re-insert the empty Drive Cartridge into the Handle.



- To prevent the FLOSS from getting tangled, only press and pull the Drive Wheel when the stiff end of the FLOSS is in the Drive Cartridge. The FLOSS will not advance when the soft part of the FLOSS is under the Drive Wheel.



To order more FLOSS, go to  
[www.TheAutoFlosser.com/floss](http://www.TheAutoFlosser.com/floss)



Register your AutoFlosser for  
warranty, updates, and coupons here:  
[www.TheAutoFlosser.com/register](http://www.TheAutoFlosser.com/register)



POINT. FLOSS. SMILE.

[www.TheAutoFlosser.com](http://www.TheAutoFlosser.com)

© AUTOFLOSSER, LLC 2020  
Patent: US 11,331,175